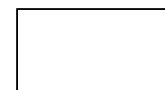
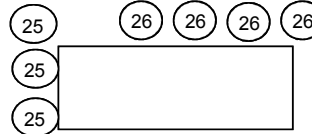
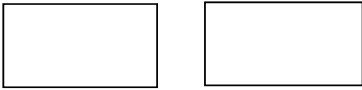


2010 Labor Day Parade Line-up Map

JEFFERSON



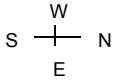
LABOR DAY PARADE

Monday, September 6, 2010

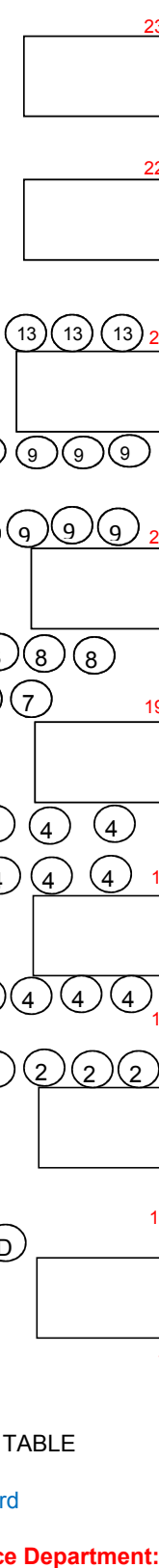
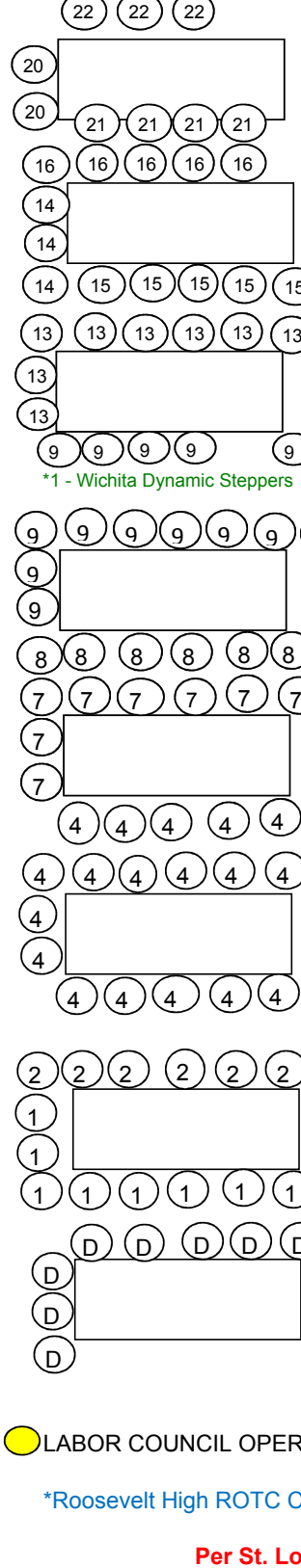
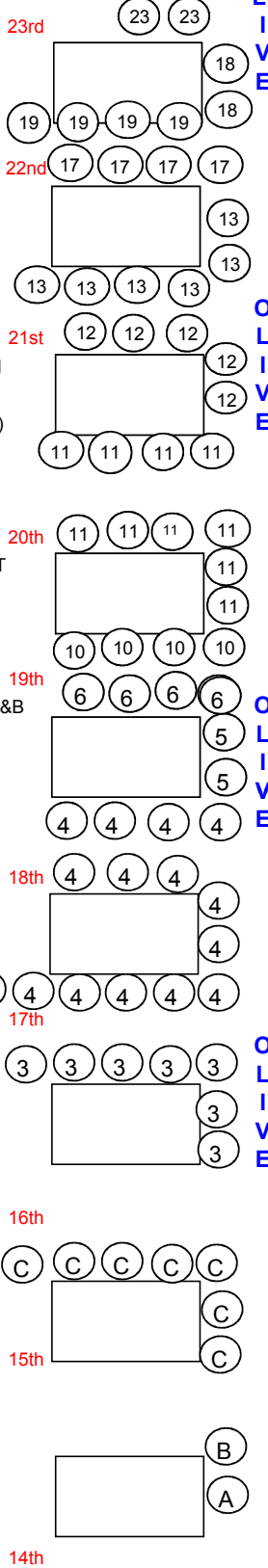
Line-up: 7:00 a.m. ~ Start: 9:00 a.m.

Line-up on Olive between Jefferson & 15th Street (Plus some side streets)

Route: East on Olive @ 15th to Tucker, South on Tucker to Market, West on Market to 15th to adjourn.



- A. Mayor, Police Chief, Fire Chief & Color Guard
- B. Musicians
- C. USW/Gas Workers, 11-6 & 11-194 (75 Years)
- D. AFT, 420 (75 Years)
- 1. IBEW, 1,2,4,1439,1455 & Op Eng 148
- 2. Laborers, 42, 53, 110 & 660
- 3. Brick1, Insulators1, & Sprinkler Fitters
- 4. Teamsters13,600,610,618,682,688&GCC/IBT
- 5. St. Louis CBTU
- 6. National Association of Letter Carriers
- 7. UFCW, 655
- 8. UAW, 110, 282 & 2250
- 9. Machinists 9, 41, 688, 777 & 1345, D837 & A&B
- 10. Roofers, 2
- 11. Ironworkers, 396
- 12. Painters District Council 2 & Glaziers 513
- 13. Transit Union, 788
- 14. Coalition of Labor Union Women
- 15. Unite Here, 74
- 16. Fire Fighters, 2665
- 17. Plumbers & Pipefitters, 562
- 18. Bakers, 4
- 19. Elevator Constructors, 3
- 20. CWA, 6300 & Newspaper Guild
- 21. St. Louis Police Officers Association
- 22. SEIU, 1 & 2000
- 23. Cement Masons
- 24. Stagehands, 6
- 25. St. Louis Gateway Postal Workers
- 26. Sheet Metal Workers, 36



ADDITIONS:

- *1 - Wichita Dynamic Steppers
- * - Roosevelt High ROTC Color Guard

LABOR COUNCIL OPERATIONS TABLE

*Roosevelt High ROTC Color Guard

**Per St. Louis Police Department:
Left Turn Lane Must Be Kept Open
For Emergency Vehicle Use**